

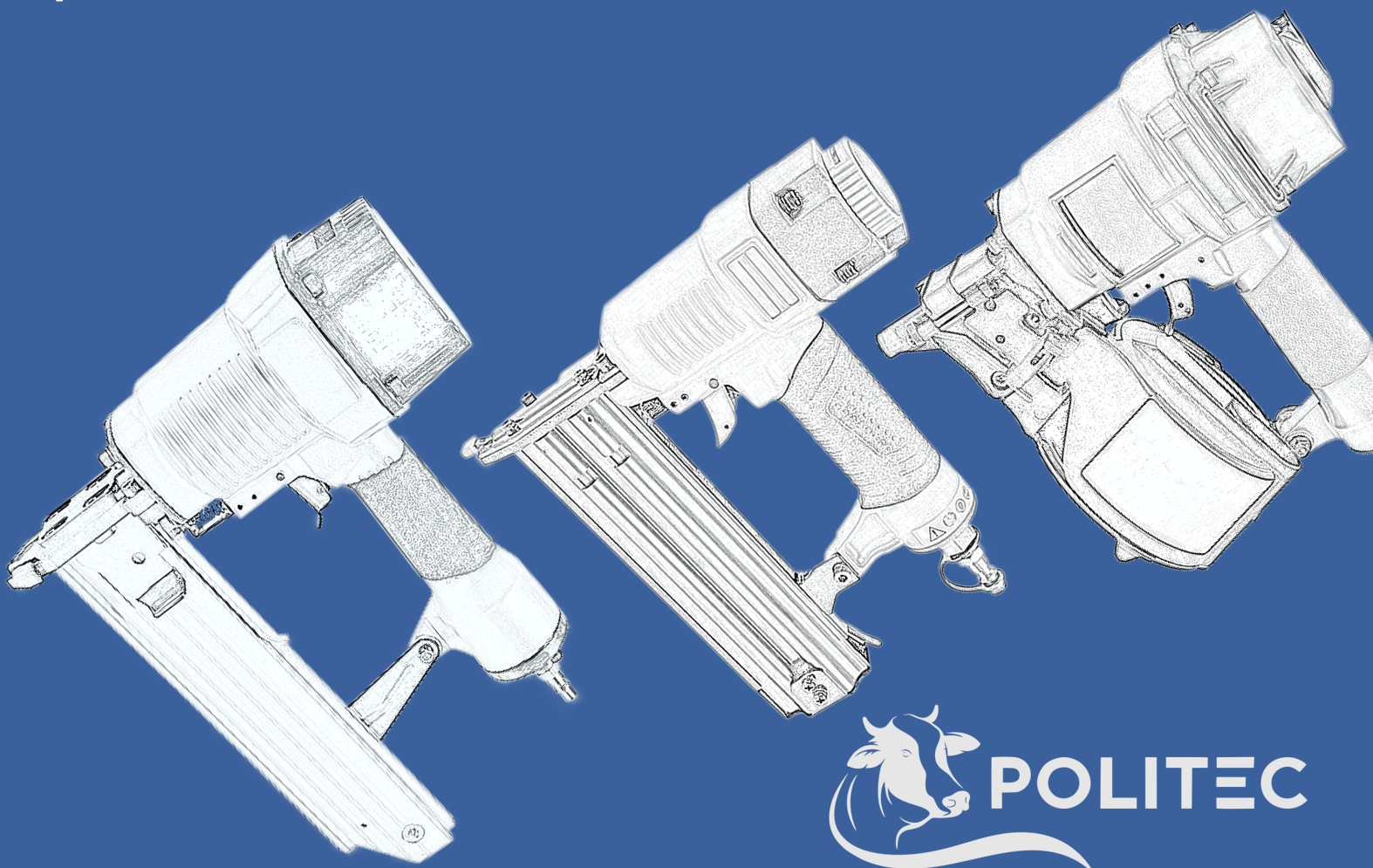
Catálogo **Batentes**

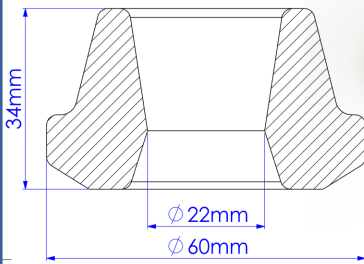
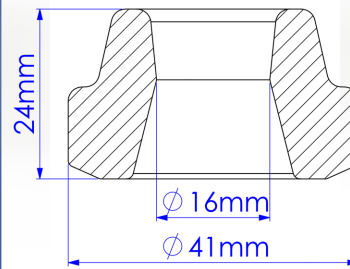
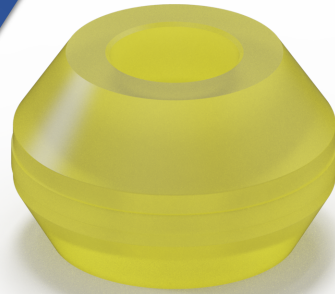
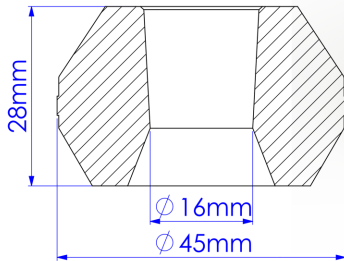
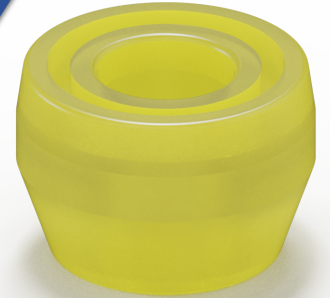
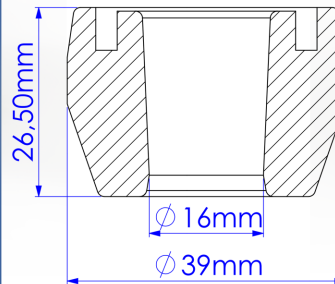
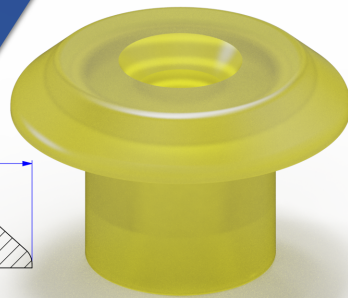
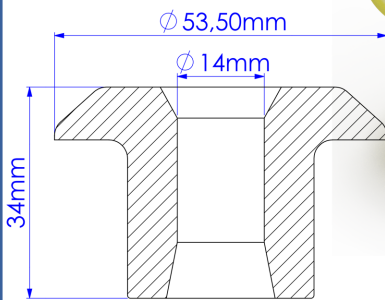
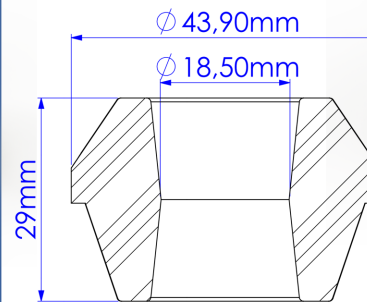
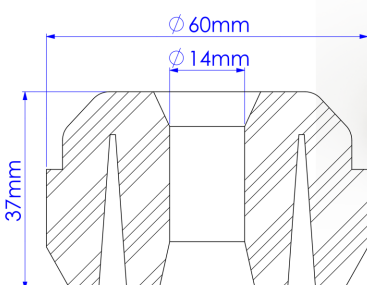
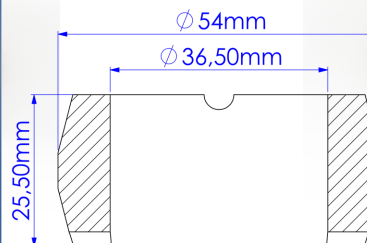
A series of vertical blue lines of varying heights, creating a decorative underline for the word "Batentes".

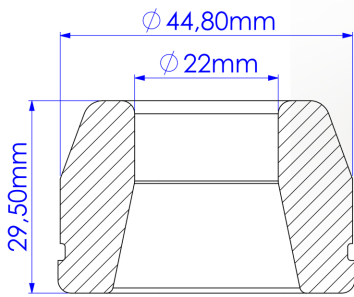
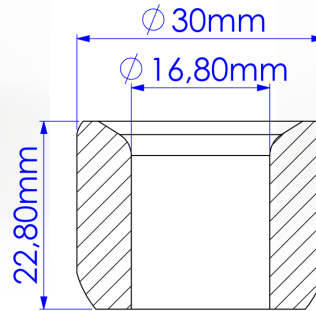
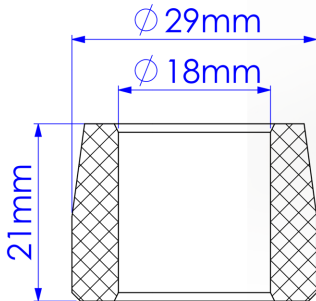
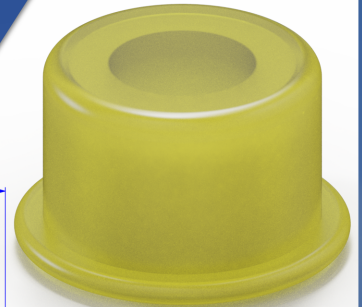
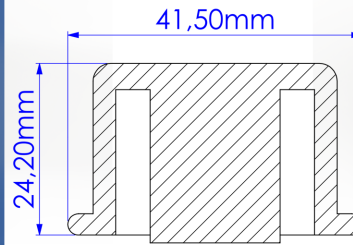
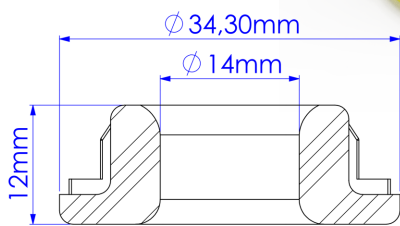
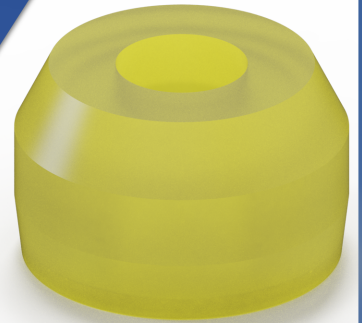
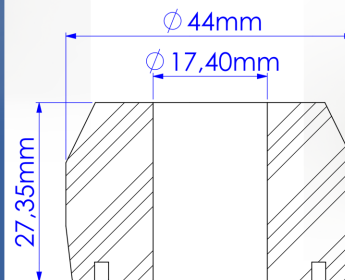
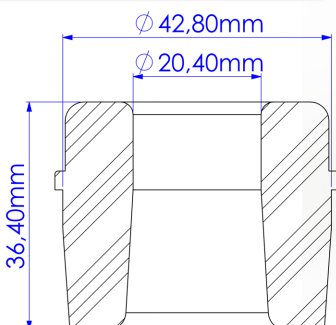
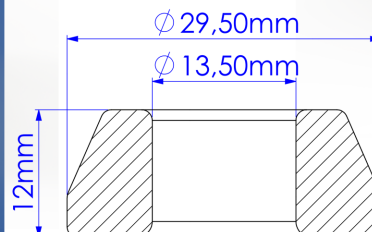
Batentes e Amortecedores

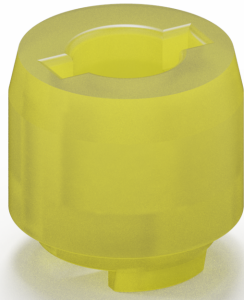
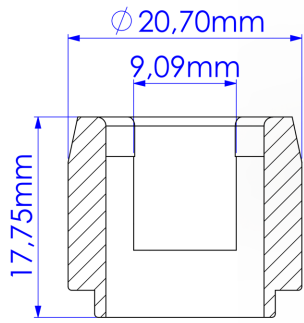
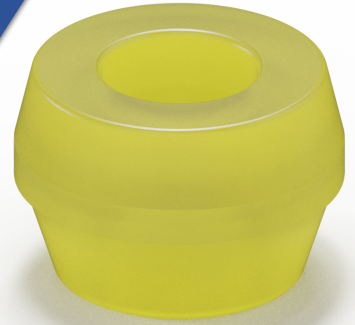
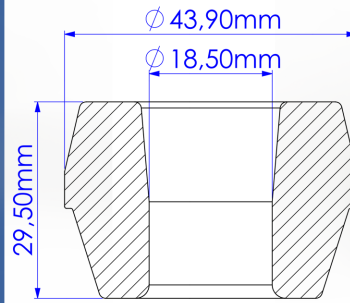
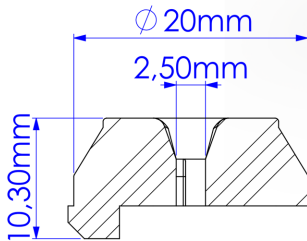
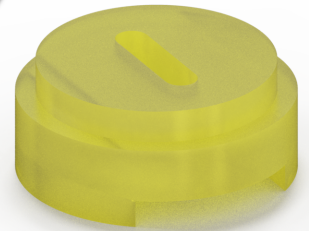
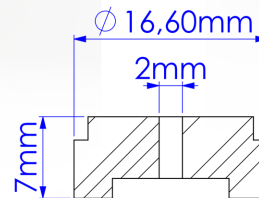
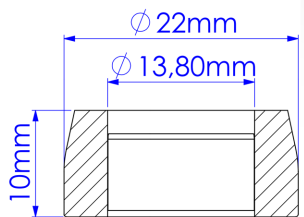
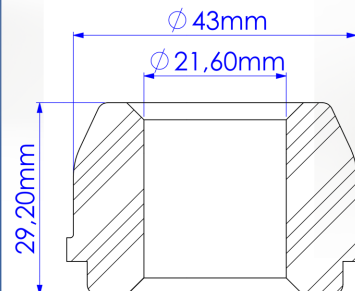
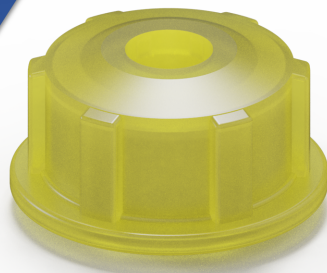
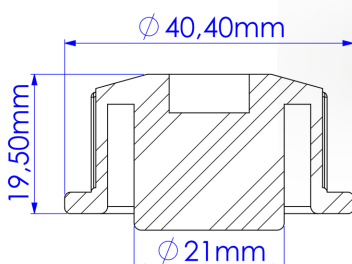
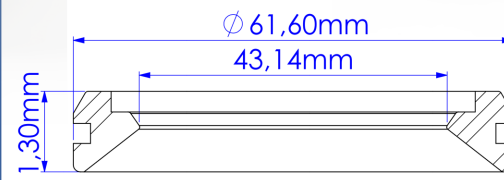
A linha de batentes e amortecedores POLITEC foi desenvolvida visando atender uma ampla gama de modelos entre grampeadores pinadores e pregadeiras.

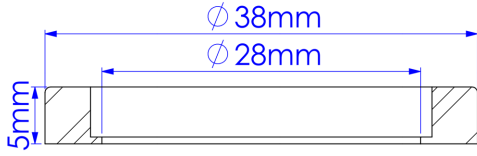
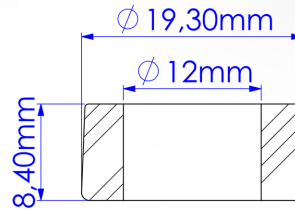
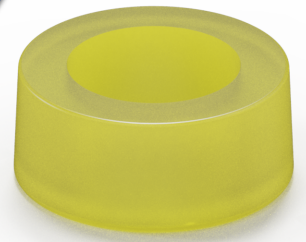
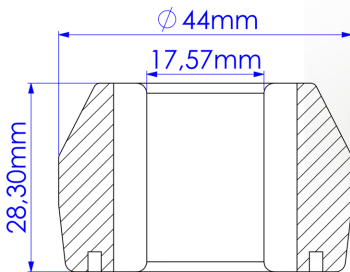
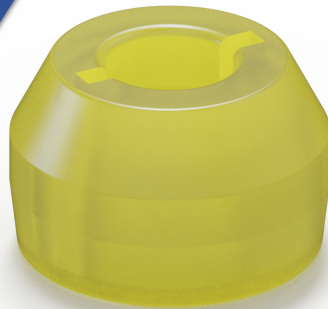
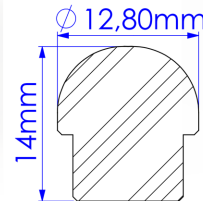
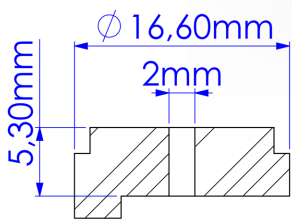
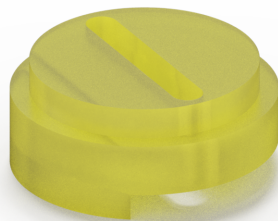
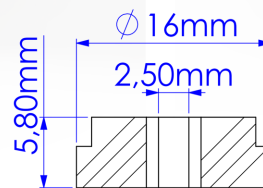
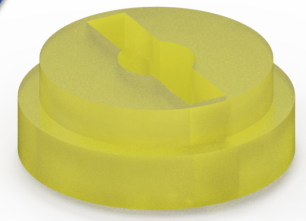
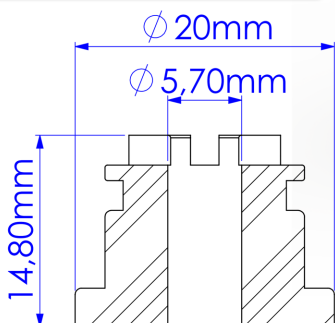
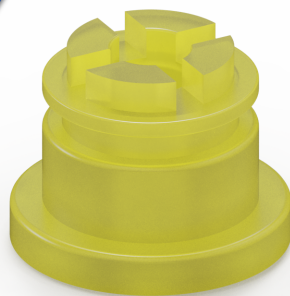
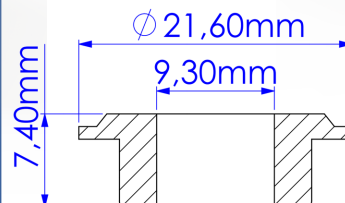
A POLITEC em sintonia com o mercado e com a proposta de sempre oferecer soluções para seus clientes desenvolve batentes e amortecedores personalizados, sob consulta.

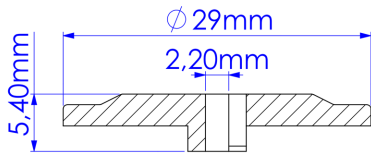
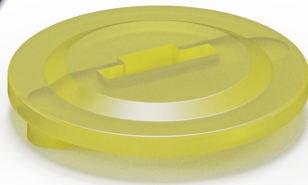
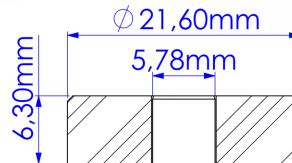
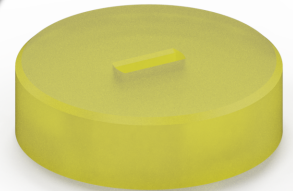
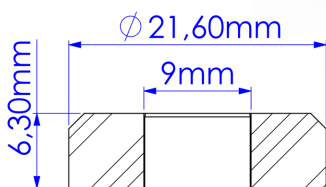
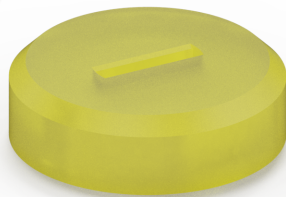
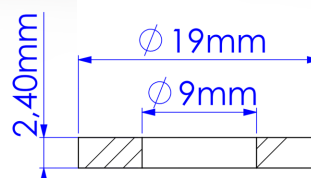
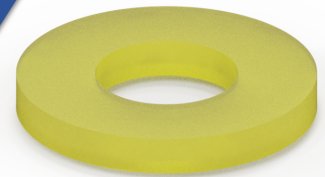
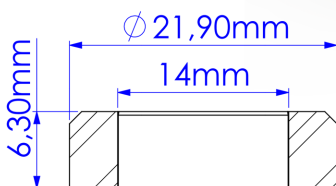
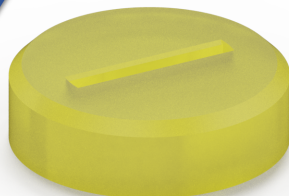
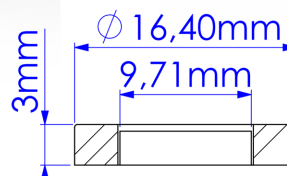
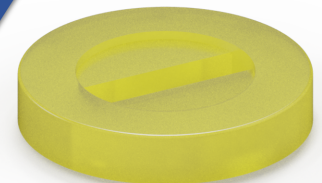
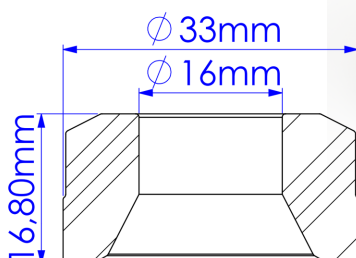
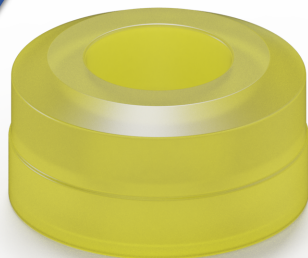
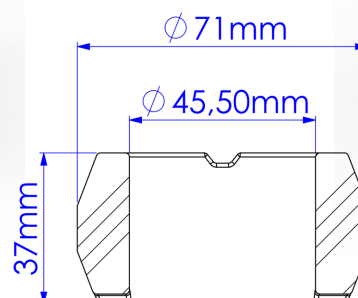


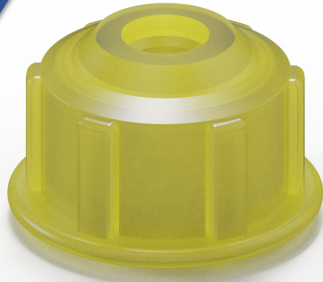
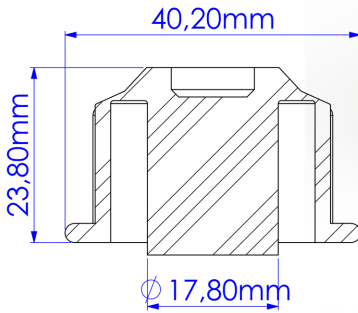
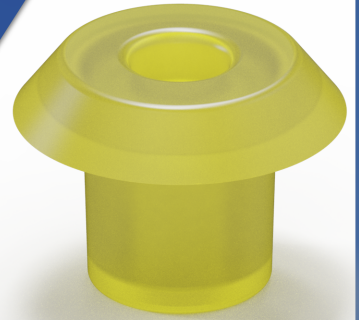
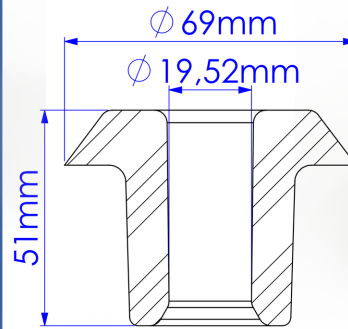
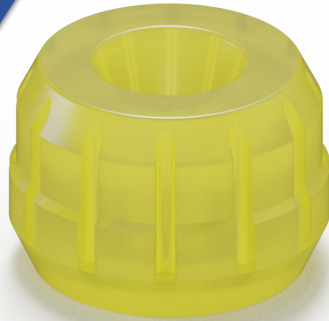
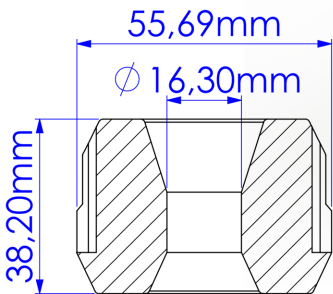
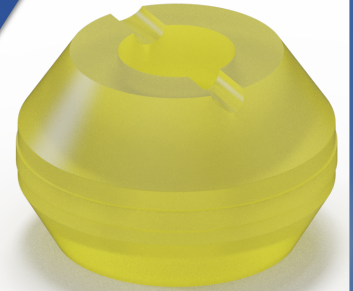
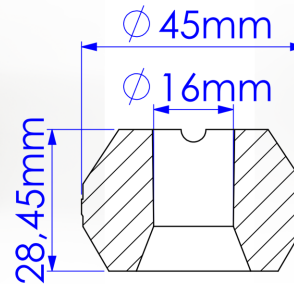
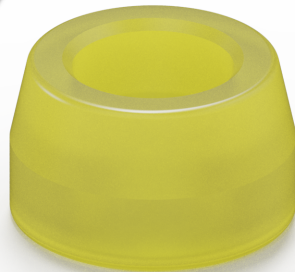
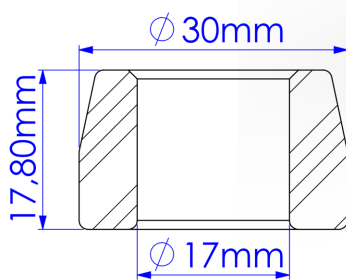
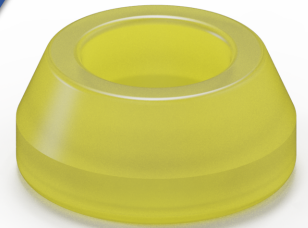
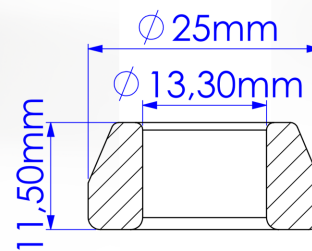
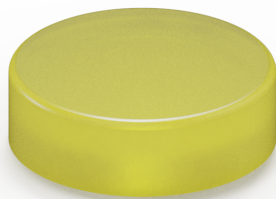
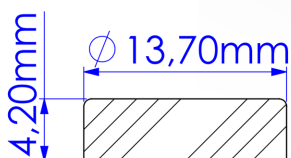
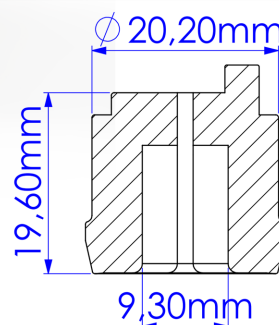
**Código Politec
2040**

**Código Politec
2041**

**Código Politec
2042**

**Código Politec
2043**

**Código Politec
2044**

**Código Politec
2045**

**Código Politec
2046**

**Código Politec
2047**


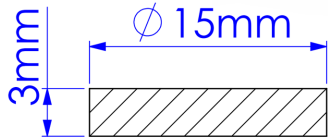
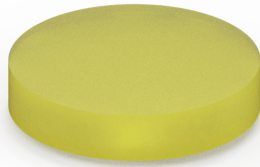
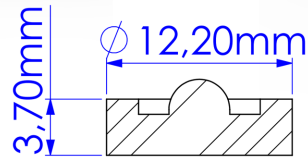
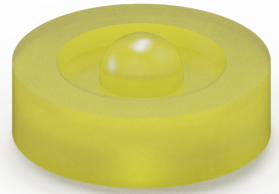
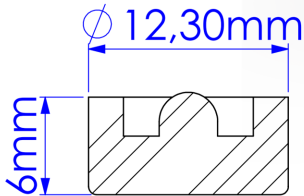
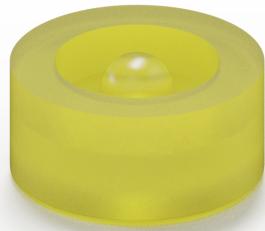
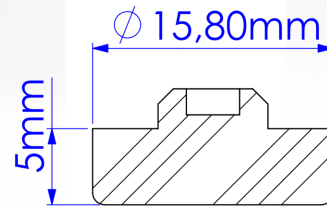
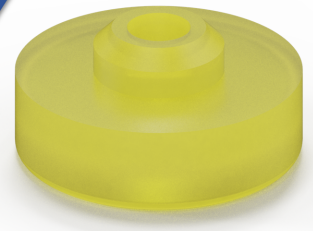
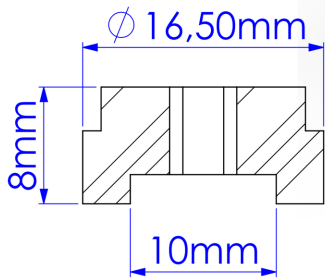
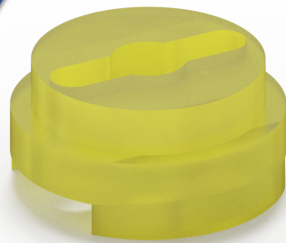
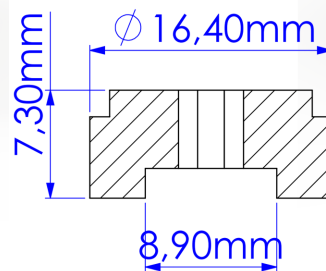
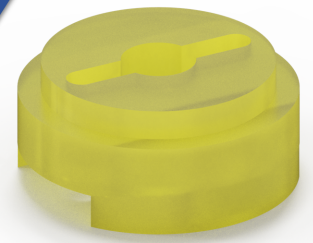
**Código Politec
2048**

**Código Politec
2049**

**Código Politec
2050**

**Código Politec
2051**

**Código Politec
2052**

**Código Politec
2053**

**Código Politec
2054**

**Código Politec
2055**


**Código Politec
2056**

**Código Politec
2057**

**Código Politec
2058**

**Código Politec
2059**

**Código Politec
2060**

**Código Politec
2061**

**Código Politec
2062**

**Código Politec
2063**


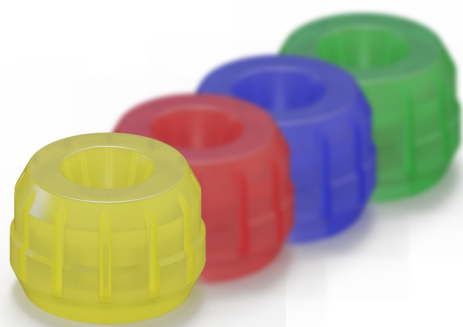
**Código Politec
2064**

**Código Politec
2065**

**Código Politec
2066**

**Código Politec
2067**

**Código Politec
2068**

**Código Politec
2069**

**Código Politec
2070**

**Código Politec
2071**


**Código Politec
2072**

**Código Politec
2073**

**Código Politec
2074**

**Código Politec
2075**

**Código Politec
2076**

**Código Politec
2077**

**Código Politec
2078**

**Código Politec
2079**


**Código Politec
2080**

**Código Politec
2081**

**Código Politec
2082**

**Código Politec
2083**

**Código Politec
2084**

**Código Politec
2085**

**Código Politec
2086**

**Código Politec
2087**


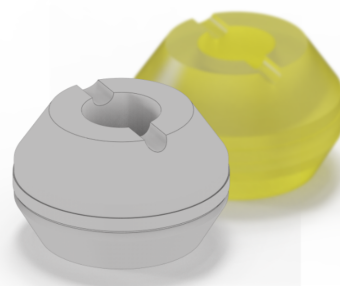
**Código Politec
2088**

**Código Politec
2089**

**Código Politec
2090**

**Código Politec
2091**

**Código Politec
2092**

**Código Politec
2093**


Batentes Personalizados



Todos os modelos de batentes que constam nesse catálogo podem ser desenvolvidos com a cor* de preferência do cliente, solicite ao setor comercial.

Desenvolvemos modelos fora do catálogo e personalizados, entre em contato com setor comercial para maiores informações.



*Será analisado pelo setor técnico para verificar viabilidade de desenvolvimento da cor.



Politec Indústria e Comércio de Polímeros Ltda

**Av. Cincinato Jardim do Vale, 211 - Parque dos Anjos
Gravataí / RS - CEP: 94190-330**

 **(51) 3424.4245**

 **(51) 98209.0951 / (51) 98209.0966**

 **comercial@politecpolimeros.com.br**

 **politecpolimeros.com.br**